

# Bell 412

## MAINTENANCE DOCKING SYSTEMS





## Table of Content

1.	RA Norway.....	3
1.1	Bell 412 Maintenance docking system .....	4
1.2	Antiskid surface and rubber fender protection .....	5
1.3	Heavy duty wheels with brakes .....	5
1.4	Removable/ telescope railing .....	6
1.5	Electrical including lights & pneumatic installation.....	6
1.6	Maintenance docking system design and load rating .....	7
2.	Docking System Accessories .....	8
2.1	Surface treatment .....	8
2.1.1	Pneumatic installation.....	8
2.1.1	Electrical installation .....	9
2.1.2	Storage cabinet.....	10
2.1.3	Working table.....	11
2.1.4	PC table.....	12
2.1.5	Paper dispenser.....	13
2.1.6	Container for cleaning rags.....	14
2.2	Rescue hoist cable wash trolley .....	15
3.	Bell 412 Ground Support Equipment.....	16
3.1	General description operation: .....	16
3.2	Surface treatment .....	16
3.3	Certificate .....	16
4.	Order sheet.....	17
4.1	Customer Survey and request sheet.....	17

## 1. RA Norway

RA Norway AS has experience from design, production and installation of aviation maintenance equipment. Globally we do maintenance of docking systems and ground support equipment for various helicopter-fixed wing types and models.

Our company has in house competencies and experience to design customized maintenance systems in accordance to customer's needs.

In co-operation with our customers, we generate solutions that lead to a safe and efficient way of performing maintenance for our customers. Military and civilian aircraft operators worldwide use our products.

Our products are;

- **Safe for maintenance personal**
- **Cost effective maintenance**
- **Tailored to customers' needs**
- **Light weight**
- **Easy to operate**
- **Maintenance free**
- **Dynamic and fully adjustable**
- **Modular in sections**
- **Extendable with other platforms**
- **No damage to aircraft**
- **Spark free**
- **Equipped with pneumatic and electrical outlets**
- **Integrated with lightning system for optimal working conditions**
- **Designed in accordance to international standards**



## 1.1 Bell 412 Maintenance docking system

Part Name	Maintenance docking system
Part Number	Consist of: <ul style="list-style-type: none"><li>• Side Platform R/H</li><li>• Side Platform L/H</li><li>• Tail side platform L/H</li><li>• Tail side platform R/H</li><li>• Nose Platform</li></ul>
AMM Reference	N/A

### General description:

This docking system supports all maintenance activities on the Bell 412. It is produced in lightweight aluminum and the floor have an antiskid surface. All edges against the fuselage have a rubber protection band to avoid any harm to the helicopter. There is a variety of options to choose from as lighting, pneumatic and other accessories as described in this brochure.





## 1.2 Antiskid surface and rubber fender protection



## 1.3 Heavy duty wheels with brakes

Swivel wheels with brakes, 600kg load per wheel.





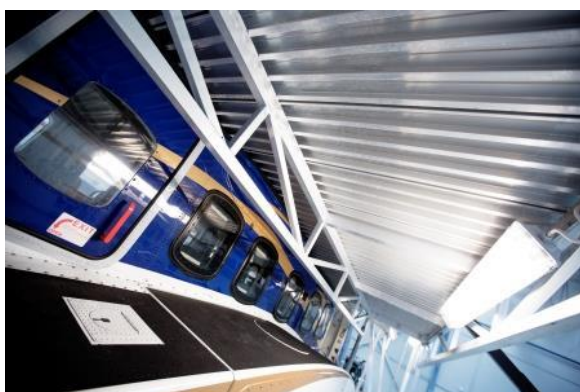
## 1.4 Removable/ telescope railing

In some places, it is required to be able to lower the railing.



## 1.5 Electrical including lights & pneumatic installation

This option has a single point electrical connection on each stand, connected to a numerous electrical connection around the stands. It gives the mechanic easy access to electrical power as they are working around the helicopter. It adds lighting under both side stands and railing to improve the working conditions for the mechanic. The customer may choose between 220V and 110V installation.





## 1.6 Maintenance docking system design and load rating

Design for 200 kg/m<sup>2</sup>



## 2. Docking System Accessories

### 2.1 Surface treatment

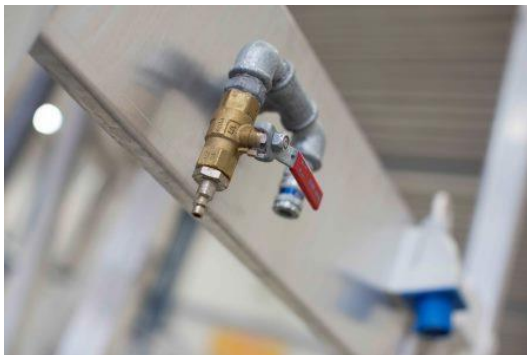
All ground support accessories are powder coated red to give durability and a nice finish.

#### 2.1.1 Pneumatic installation

<b>Part Name</b>	Pneumatic Installation
<b>Part Number</b>	RA-412DSA- 1854-0
<b>AMM Reference</b>	N/A

#### General description:

This option has a single point pneumatic connection on each stand, connected to a numerous pneumatic connections around the stands. It gives the mechanic easy access to air as they are working around the helicopter.





### 2.1.1 Electrical installation

<b>Part Name</b>	Electrical Installation
<b>Part Number</b>	RA-4122DSA- 1857-0 (220 V)
<b>AMM Reference</b>	N/A

#### General description:

This option has a single point electrical connection on each stand, connected to a numerous electrical connections around the stands. It gives the mechanic easy access to electrical power as they are working around the helicopter. It adds lighting under both side stands to improve the working conditions.



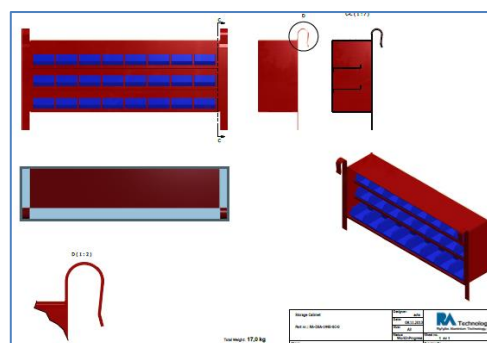
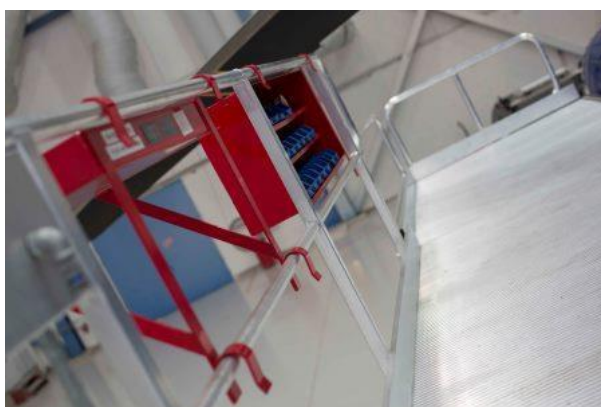


### 2.1.2 Storage cabinet

<b>Part Name</b>	Storage cabinet
<b>Part Number</b>	RA-DSA- 1990-0
<b>AMM Reference</b>	N/A

#### General description:

The storage cabinets are designed to hold fairing screws, removed component etc. They slide over the side rails, and can be positioned where most suitable. It is up to each operator to determine how many needed and how to utilize them. The recommendation is one on each side stand and one on the tail stand, three altogether.



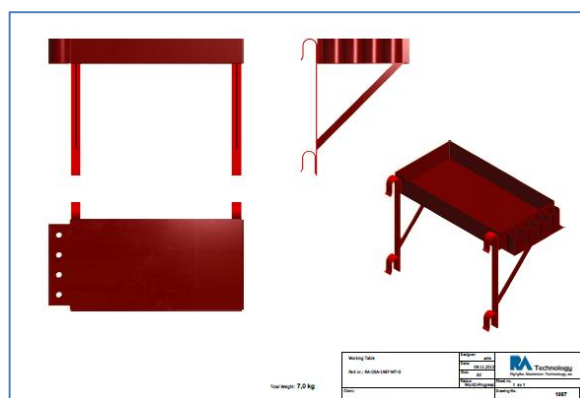


### 2.1.3 Working table

<b>Part Name</b>	Working table
<b>Part Number</b>	RA-DSA- 1987-WT-0
<b>AMM Reference</b>	N/A

#### General description:

The working tables are designed to hold tools, removed component etc. They slide over the side rails, and can be positioned where most suitable.  
It is up to each operator to determine how many needed and how to utilize them.  
The recommendation is one on each side stand and one on the tail stand, three altogether.



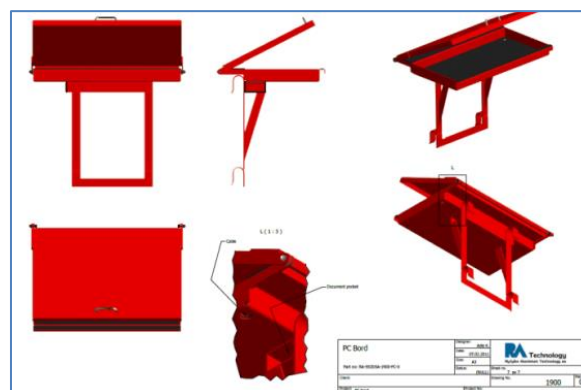


### 2.1.4 PC table

<b>Part Name</b>	PC table
<b>Part Number</b>	RA-DSA- 1816-0PC
<b>AMM Reference</b>	N/A

#### General description:

The PC tables are designed support a PC for the mechanic during his work. They slide over the side rails, and may be positioned where most suitable. It is up to each operator to determine how many needed and how to utilize them. The recommendation is one on each side stand and one on the tail stand, three altogether.



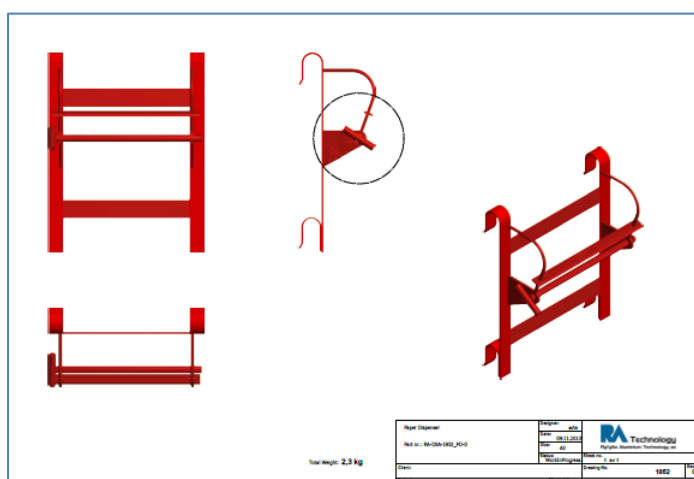


### 2.1.5 Paper dispenser

<b>Part Name</b>	Paper dispenser
<b>Part Number</b>	RA-DSA- 1852-PD-0
<b>AMM Reference</b>	N/A

#### General description:

The paper dispenser is designed to support paper rolls. They slide over the side rails, and may be positioned where most suitable. It is up to each operator to determine how many needed and how to utilize them. The recommendation is one on each side stand and one on the tail stand, three altogether.



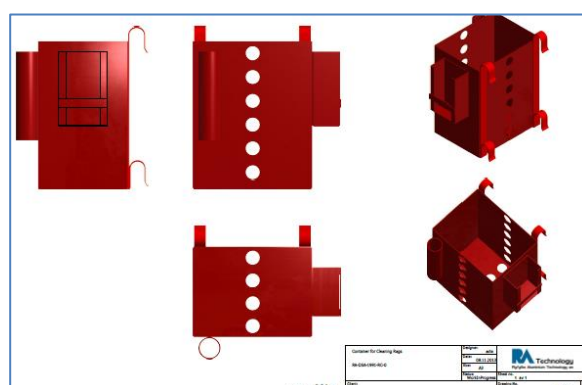


### 2.1.6 Container for cleaning rags

<b>Part Name</b>	Container for cleaning rags
<b>Part Number</b>	RA-DSA- 1991-0
<b>AMM Reference</b>	N/A

#### General description:

The container for rags is designed to support paper rolls. They slide over the side rails, and may be position where most suitable.  
It is up to each operator to determine how many needed and how to utilize them.  
The recommendation is one on each side stand and one on the tail stand, three altogether.



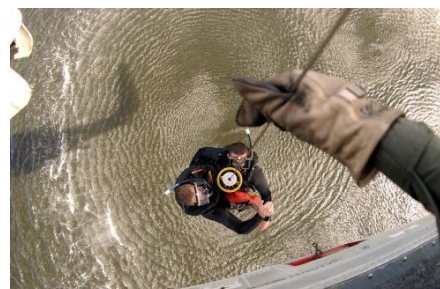


## 2.2 Rescue hoist cable wash trolley

<b>Part Name</b>	Rescue hoist cable wash trolley
<b>Part Number</b>	RA-GSE-2071-1-RHC
<b>MM Reference</b>	N/A

### General description:

The Rescue hoist-cable wash trolley is designed for safe and easy washing of rescue cable after use. The trolley consists of a wash basin and a drum that reels the cable. The drum is equipped with adjustable braking system that ensures correct tension when spooling the cable.



### **3. Bell 412 Ground Support Equipment**

#### **3.1 General description operation:**

Accessories are usable for maintenance and line maintenance docking system.

#### **3.2 Surface treatment**

All ground support accessories are powder coated red to give durability and a nice finish.

#### **3.3 Certificate**

All equipment like slings etc. is delivered with a certificate.



## 4. Order sheet

### 4.1 Customer Survey and request sheet

Fill in order sheet:

Description	Part Number	Qty
<b>Maintenance Docking System</b>		
Side Platform R/H		
Side Platform L/H		
Tail cone side Platform R/H		
Tail cone side Platform L/H		
Nose Platform		
<b>Docking system accessories</b>		
Storage cabinet	RA-DSA- 1990-SC-0	
Electrical installation		
Pneumatics Installation		
Working Table	RA-DSA-1987-WT-0	
PC Working Table	RA-DSA- 1816-PC-0	
Paper Dispenser	RA-DSA-1852-PD-0	
Container for cleaning rags	RA-DSA-1991-CR-0	
Rescue hoist cable wash trolley	RA-GSE-2071-1-RHC	