

AW 189

MAINTENANCE DOCKING SYSTEMS

&

GROUND SUPPORT EQUIPMENT





Table of Content

1.	RA Norway.....	3
1.1	AW 189 Maintenance docking system	4
1.2	Antiskid surface and rubber fender protection	5
1.3	Heavy duty wheels with brakes	5
1.4	Removable/ telescope railing	6
1.5	Electrical including lights & pneumatic installation.....	6
1.6	Maintenance docking system design and load rating	7
2.	Docking system accessories	8
2.1	Surface treatment	8
2.1.1	Pneumatic installation	8
2.1.2	Electrical installation	9
2.1.3	Storage cabinets.....	10
2.1.4	Working table.....	11
2.1.5	PC table.....	12
2.1.6	Paper dispenser.....	13
2.1.7	Container for cleaning rags.....	14
3.	AW 189 Ground Support Equipment.....	15
3.1	General description operation:	15
3.2	Surface treatment	15
3.3	Certificate	15
3.4	ATA 9 Towing	16
3.4.1	AW 139 Tow bar	16
3.5	ATA 25 Equipment furnishing	17
3.5.1	Cabin cargo loading system.....	17
3.6	ATA 62 Main rotor.....	18
3.6.1	Main rotor blade trolley	18
3.7	ATA 25 Rescue Hoist Cable Wash Trolley.....	19
4.	Order sheet.....	20

1. RA Norway

RA Norway AS has experience from design, production and installation of aviation maintenance equipment. Globally we do maintenance of docking systems and ground support equipment for various helicopter-fixed wing types and models.

Our company has in house competencies and experience to design customized maintenance systems in accordance to customer's needs.

In co-operation with our customers, we generate solutions that lead to a safe and efficient way of performing maintenance for our customers. Military and civilian aircraft operators worldwide use our products.

Our products are;

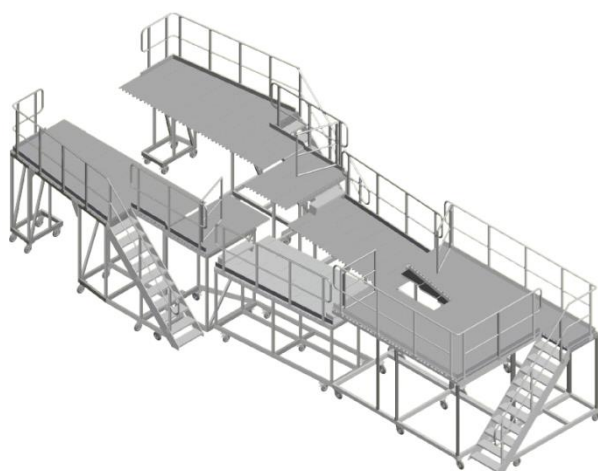
- **Safe for maintenance personal**
- **Cost effective maintenance**
- **Tailored to customers' needs**
- **Light weight**
- **Easy to operate**
- **Maintenance free**
- **Dynamic and fully adjustable**
- **Modular in sections**
- **Extendable with other platforms**
- **No damage to aircraft**
- **Spark free**
- **Equipped with pneumatic, and electrical outlets**
- **Integrated lightning system for optimal working conditions**
- **Designed in accordance to international standards**


1.1 AW 189 Maintenance docking system

Part Name	Maintenance docking system
Part Number RA-AW-189-MD-2136-0 RA-AW-189-MD-2137-0 RA-AW-189-MD-2139-0 RA-AW-189-MD-2138-0 RA-AW-189-MD-2140-0	Consist of: <ul style="list-style-type: none"> • Side Platform R/H • Side Platform L/H • Tail side platform L/H • Tail side platform R/H • Tail Platform R-L/H
AMM Reference	N/A

General description:

This docking system supports all maintenance activities on the AW-189. It is produced in lightweight aluminum and the floor have an antiskid surface. All edges against the fuselage have a rubber protection band to avoid any harm to the helicopter. There is a variety of options to choose from as lighting, pneumatic and other accessories as described in this brochure.



Doc: Docking AW 139	Project: AW 139	 RA Technology Ryfylke Aluminium Technology AS
Date: 06.02.2012	Rev: A3	
Client: Ryfylke Aluminium Technology	Order No: 1917 / 1918 / 1919	Sheet No: 1 av 1
Project: Docking AW 139	Project No:	

1.2 Antiskid surface and rubber fender protection



1.3 Heavy duty wheels with brakes

Swivel wheels with brakes, 600kg load per wheel.



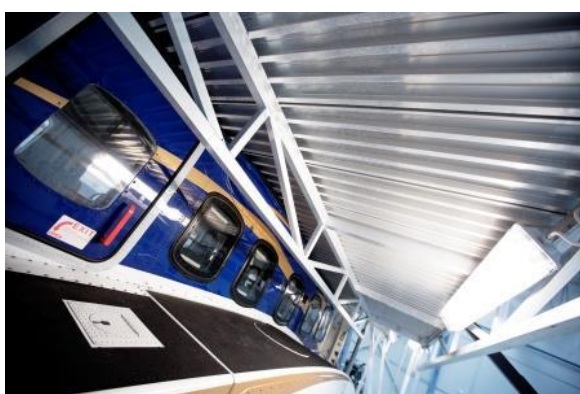
1.4 Removable/ telescope railing

In some places, it is required to be able to lower the railing.



1.5 Electrical including lights & pneumatic installation

This option has a single point electrical connection on each stand, connected to a numerous electrical connection around the stands. It gives the mechanic easy access to electrical power as they are working around the helicopter. It adds lighting under both side stands and railing to improve the working conditions for the mechanic. The customer may choose between 220V or 110V Installation.



1.6 Maintenance docking system design and load rating

Design for 200 kg/m²



2. Docking system accessories

2.1 Surface treatment

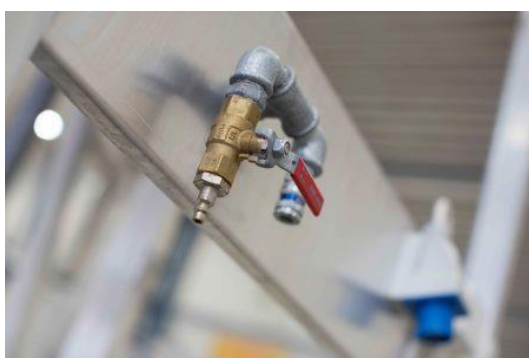
All ground support accessories are powder coated red to give durability and a nice finish.

2.1.1 Pneumatic installation

Part Name	Pneumatic installation
Part Number	RA-AW189DSA- 1854-0
AMM Reference	N/A

General description:

This option has a single point pneumatic connection on each stand, connected to a numerous pneumatic connections around the stands. It gives the mechanic easy access to air as they are working around the helicopter.

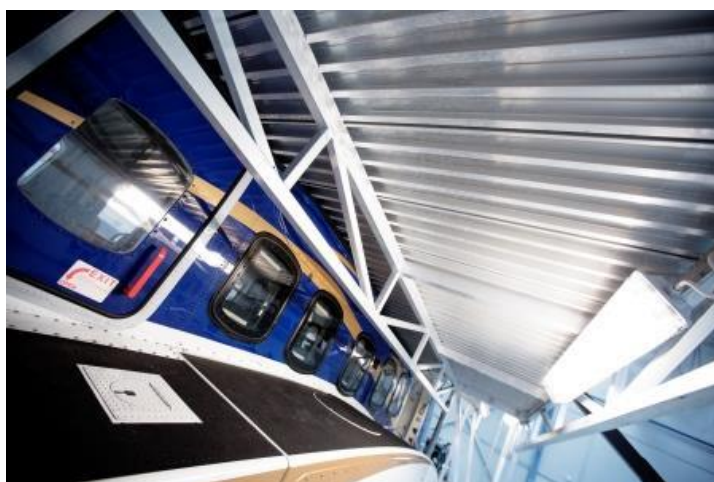


2.1.2 Electrical installation

Part Name	Electrical installation
Part Number	RA-AW189DSA- 1857-0 (220 V)
AMM Reference	N/A

General description:

This option has a single point electrical connection on each stand, connected to a numerous electrical connections around the stands. It gives the mechanic easy access to electrical power as they are working around the helicopter. It adds lighting under both side stands to improve the working conditions.

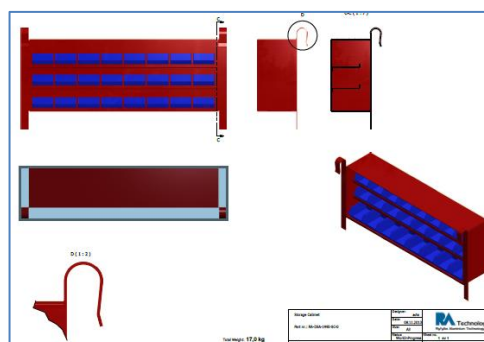
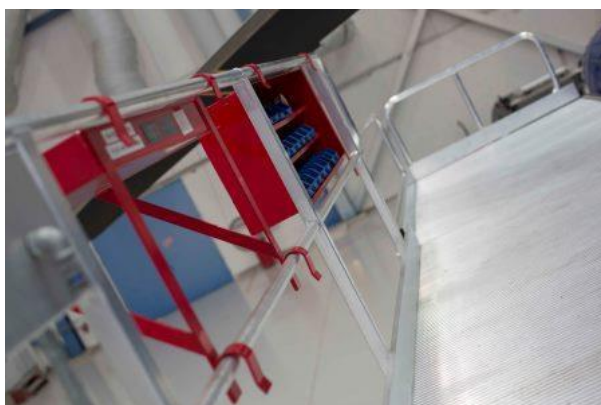


2.1.3 Storage cabinets

Part Name	Storage cabinets
Part Number	RA-DSA- 1990-0
AMM Reference	N/A

General description:

The storage cabinets are designed to hold fairing screws, removed component etc. They slide over the side rails, and can be positioned where most suitable. It is up to each operator to determine how many needed and how to utilize them. The recommendation is one on each side stand and one on the tail stand, three altogether.

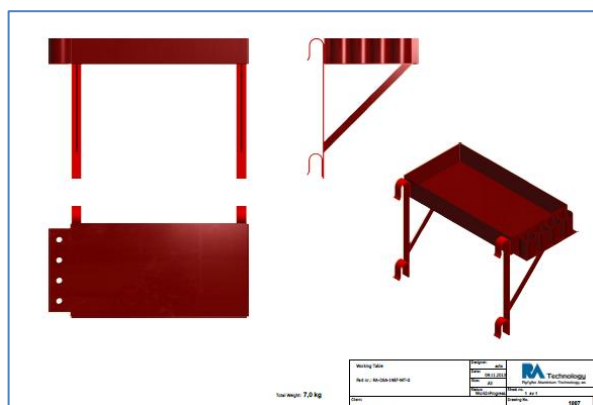


2.1.4 Working table

Part Name	Working table
Part Number	RA-DSA- 1987-WT-0
AMM Reference	N/A

General description:

The working tables are designed to hold tools, removed component etc. They slide over the side rails and can be positioned where most suitable. It is up to each operator to determine how many needed and how to utilize them. The recommendation is one on each side stand and one on the tail stand, three altogether.

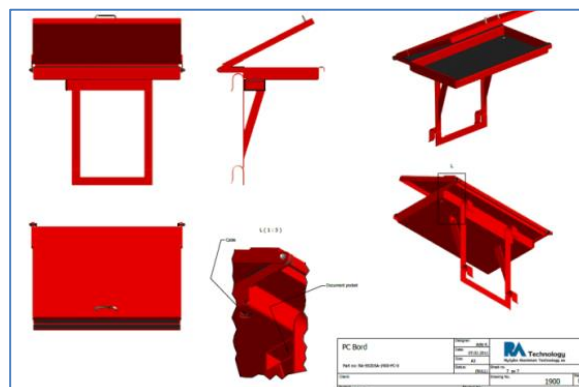


2.1.5 PC table

Part Name	PC table
Part Number	RA-DSA- 1816-0PC
AMM Reference	N/A

General description:

The PC tables are designed support a PC for the mechanic during his work. They slide over the side rails and may be positioned where most suitable. It is up to each operator to determine how many needed and how to utilize them. The recommendation is one on each side stand and one on the tail stand, three altogether.

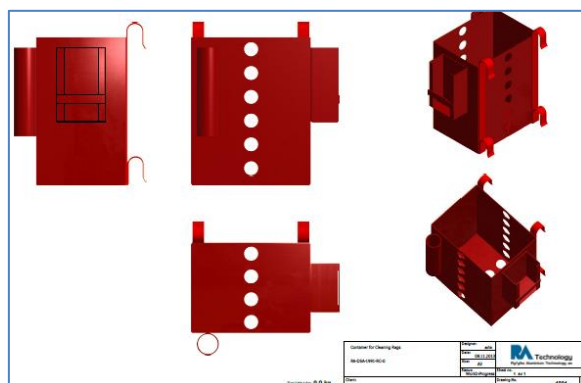


2.1.7 Container for cleaning rags

Part Name	Container for cleaning rags
Part Number	RA-DSA- 1991-0
AMM Reference	N/A

General description:

The container for rags is designed to support paper rolls. They slide over the side rails and may be position where most suitable.
 It is up to each operator to determine how many needed and how to utilize them.
 The recommendation is one on each side stand and one on the tail stand, three altogether.



3. AW 189 Ground Support Equipment

3.1 General description operation:

Accessories are usable for maintenance and line maintenance docking system.

3.2 Surface treatment

All ground support accessories are powder coated red to give durability and a nice finish.

3.3 Certificate

All equipment like slings etc. is delivered with a certificate.

3.4 ATA 9 Towing

3.4.1 AW 139 Tow bar

Part Name	AW189 Tow bar
Part Number	
MM Reference	09-00-00

General description:

Tow bar for moving the helicopter on ground.



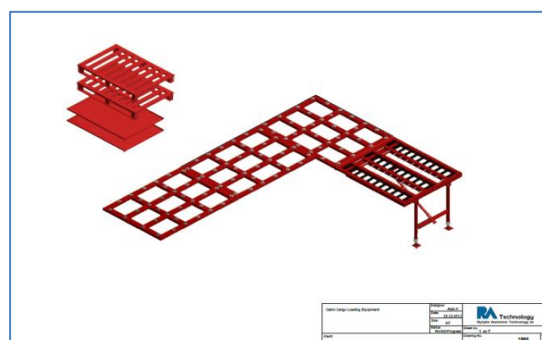
3.5 ATA 25 Equipment furnishing

3.5.1 Cabin cargo loading system

Part Name	Cabin cargo loading system
Part Number	RA-GSE- 1885-0 Consist of : * 1 ea Hinged roller / ball board with support legs * 2 ea Sliding board * 2 ea roller segments * 2 ea aluminum pallet
MM Reference	25

General description:

The cabin cargo loading system is designed to support loading of cabin cargo. It has a roller/ ball concept that makes it easy to load pallets and baskets into the cabin to be strapped to the floor. It is rated for loads up to 500 kg/ 1000 lbs.



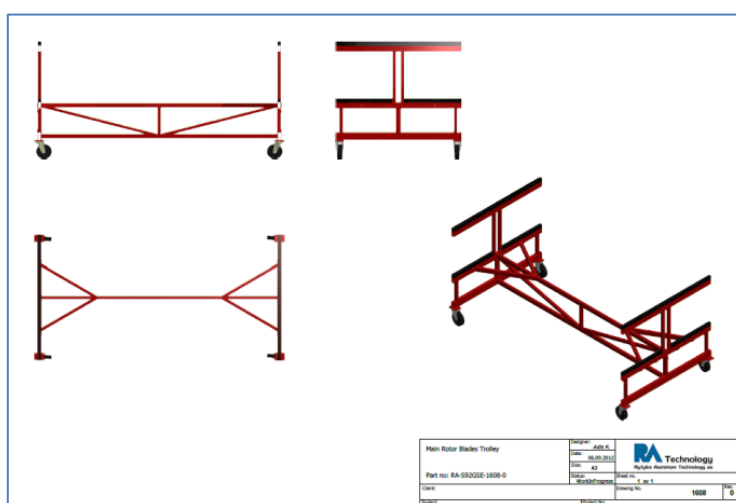
3.6 ATA 62 Main rotor

3.6.1 Main rotor blade trolley

Part Name	Main rotor blade trolley
Part Number	
MM Reference	62

General description:

The main rotor blade trolley is designed to support all four main rotor blades when they are removed from the helicopter.

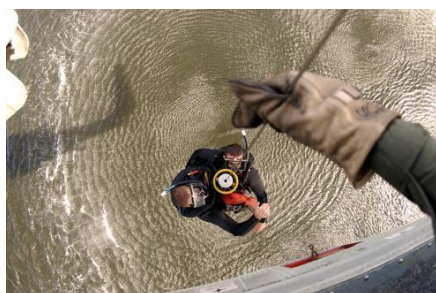


3.7 ATA 25 Rescue Hoist Cable Wash Trolley

Part Name	Rescue Hoist Cable Wash Trolley
Part Number	RA-GSE-2071-1-RHC
MM Reference	N/A

General description:

The Rescue hoist-cable wash trolley is designed for safe and easy washing of rescue cable after use. The trolley consists of a wash basin and a drum that reels the cable. The drum is equipped with adjustable braking system that ensures correct tension when spooling the cable.



4. Order sheet

Fill in order sheet:

Description	Part Number	Qty
Maintenance Docking System		
Side Platform R/H		
Side Platform L/H		
Tail cone side Platform R/H		
Tail cone side Platform L/H		
Tail Platform R/H		
Tail Platform L/H		
Docking system accessories		
Storage cabinet	RA-DSA- 1990-SC-0	
Electrical installation		
Pneumatics Installation		
Working Table	RA-DSA-1987-WT-0	
PC Working Table	RA-DSA- 1816-PC-0	
Paper Dispenser	RA-DSA-1852-PD-0	
Container for cleaning rags	RA-DSA-1991-CR-0	
GSE Equipment		
Tow Bar		
Cabin Cargo loading system		
Main Rotor Blades Trolley		
Rescue Hoist Cable Wash Trolley	RA-GSE-2071-1-RHC	